

Cusped Drainage Core Range

DESCRIPTION
FEATURES

HDPE Cusped drainage board

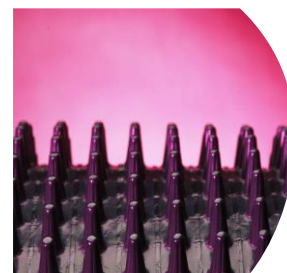
- Optimised for maximum strength and performance
- UV stabilised
- High crush resistance
- Excellent flow rate

Drainage Core – C10

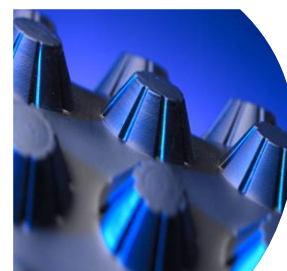
Test	Unit	MEAN VALUES
MECHANICAL PROPERTIES		
Compressive Strength - Composite	kPa	200
Tensile Strength – Geotextile (MD/CMD)	EN ISO 10319 kN/m	8.0
HYDRAULIC PROPERTIES		
In plane flow capacity @ 20kPa (i=1)	EN ISO 11058 l/s/m width	5.0
PHYSICAL PROPERTIES		
Thickness @ 2kPa	EN ISO 9863-1 mm	10
Standard Colour - Cuspate		Black
Polymer – Cuspate		HDPE
PHYSICAL PROPERTIES		
Standard Roll Length	m	50
Standard Roll Width	m	0.97
Approximate Roll Weight	kg	50


Drainage Core – C12

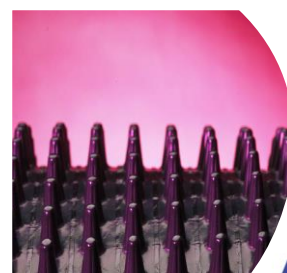
Test	Unit	MEAN VALUES
MECHANICAL PROPERTIES		
Compressive Strength - Composite	kPa	500
Tensile Strength – Geotextile (MD/CMD)	EN ISO 10319 kN/m	10.0
HYDRAULIC PROPERTIES		
In plane flow capacity @ 20kPa (i=1)	EN ISO 11058 l/s/m width	5.0
PHYSICAL PROPERTIES		
Thickness @ 2kPa	EN ISO 9863-1 mm	12
Standard Colour - Cuspate		Black
Polymer – Cuspate		HDPE
PHYSICAL PROPERTIES		
Standard Roll Length	m	50
Standard Roll Width	m	1
Approximate Roll Weight	kg	50


Drainage Core – C20

Test	Unit	MEAN VALUES
MECHANICAL PROPERTIES		
Compressive Strength - Composite	kPa	115
Tensile Strength – Geotextile (MD/CMD)	EN ISO 10319 kN/m	12.0
HYDRAULIC PROPERTIES		
In plane flow capacity @ 20kPa (i=1)	EN ISO 11058 l/s/m width	10
PHYSICAL PROPERTIES		
Thickness @ 2kPa	EN ISO 9863-1 mm	20
Standard Colour - Cuspate		Black
Polymer – Cuspate		HDPE
PHYSICAL PROPERTIES		
Standard Roll Length	m	50
Standard Roll Width	m	0.97
Approximate Roll Weight	kg	50


Drainage Core – C25

Test	Unit	MEAN VALUES
MECHANICAL PROPERTIES		
Compressive Strength - Composite	kPa	300
Tensile Strength – Geotextile (MD/CMD)	EN ISO 10319 kN/m	14.0
HYDRAULIC PROPERTIES		
In plane flow capacity @ 20kPa (i=1)	EN ISO 11058 l/s/m width	7.0
PHYSICAL PROPERTIES		
Thickness @ 2kPa	EN ISO 9863-1 mm	25
Standard Colour - Cuspate		Black
Polymer – Cuspate		HDPE
PHYSICAL PROPERTIES		
Standard Roll Length	m	50
Standard Roll Width	m	0.9
Approximate Roll Weight	kg	50

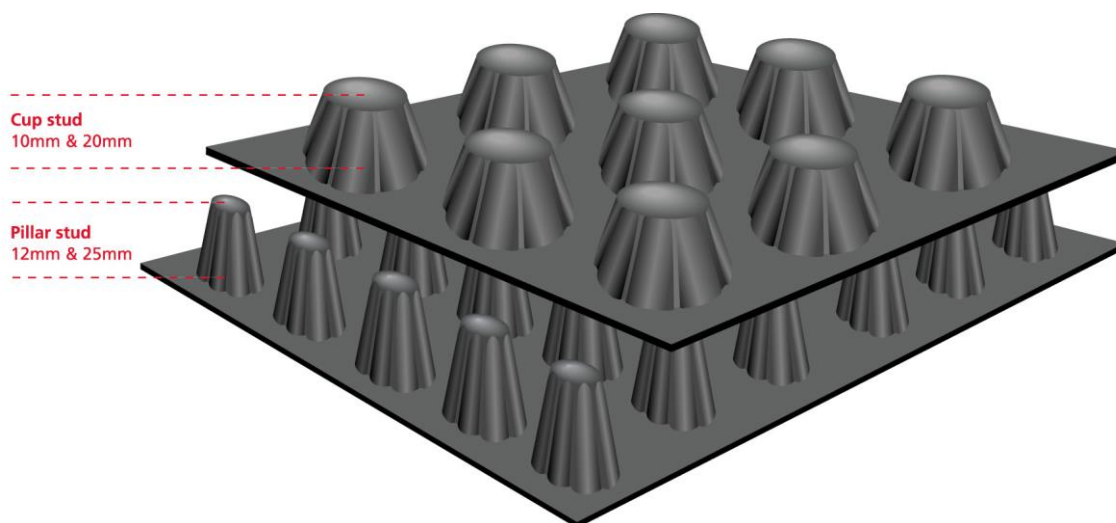


Notes:

- a) Mean values indicate the arithmetic mean derived from the samples taken for any one test as defined in the standard – usually an overall mean of five samples. Mean values are subject to tolerances based on 95% confidence limits as published on the product CE declaration of performance.

TESTING All materials are tested every 6000m² in an UKAS accredited ISO 17025 laboratory to all mechanical properties prior to release.

STORAGE Materials are supplied in packaging designed to protect the product from damage during handling and storage and degradation as a result of UV exposure. The product should be kept in appropriate packaging until such time that it is required for installation. The product is clearly and indelibly marked with the product name along the edge of the roll at regular intervals no greater than 5m. The packaging is labelled clearly to identify the product supplied in accordance with EN ISO 10320: Geotextile and Geotextile related products – Identification on site. Use slings where provided. Product weights are given on roll tickets. Use equipment appropriate to weight and dimension. Store and handle in accordance with good occupational hygiene and safety practice.



Product Data sheet
GEOfabrics Cusped drainage core range
EDS091-2017-01-31



References: **No037-DoP-2014-04-25**
No038-DoP-2014-04-25
No039-DoP-2014-04-25
No049-DoP-2014-04-25

Page:

2 of 2