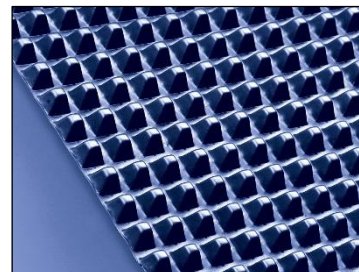


C6 Geocuspate Ventformer

- 1. DESCRIPTION** 6mm HDPE cusped drainage board.
- 2. APPLICATIONS** GEOfabrics' C6 has been designed to provide a passive venting system for gasses and liquids.
- 3. FEATURES**
- Optimised for maximum strength and performance
 - UV stabilised
 - High crush resistance
 - Excellent flow rate



	Test	Unit	MEAN VALUES		
4. MECHANICAL PROPERTIES					
Compressive strength	EN ISO 25619-2	kPa	700		
Tensile strength (MD/CMD)		kN/m	4		
Tensile elongation (MD/CMD)	EN ISO 10319	%	40		
5. HYDRAULIC PROPERTIES					
Water flow capacity in the plane (rigid/rigid)	EN ISO 12958	l/(m·s)	(i=1)	(i=0.5)	(i=0.1)
@ 20kPa			2.0	1.5	0.65
@ 100kPa			2.0	1.5	0.60
@ 200kPa			2.0	1.5	0.55
6. PHYSICAL PROPERTIES					
Thickness @ 2kPa	EN ISO 9863-1	mm	6		
Standard Colour			Black		
Polymer			HDPE		

Notes:

- a) Mean values indicate the arithmetic mean derived from the samples taken for any one test as defined in the standard – usually an overall mean of five samples. Mean values are subject to tolerances based on 95% confidence limits as published on the product CE declaration of performance.

- 7. TESTING** All materials are tested every 6000m² in an UKAS accredited ISO 17025 laboratory to all mechanical properties prior to release.
- 8. STORAGE** The geocuspates are supplied in packaging designed to protect the product from damage during handling and storage and degradation as a result of UV exposure. The product should be kept in appropriate packaging until such time that it is required for installation. The product is clearly and indelibly marked with the product name along the edge of the roll at regular intervals no greater than 5m. The packaging is labelled clearly to identify the product supplied in accordance with EN ISO 10320: Geotextile and Geotextile related products – Identification on site. Use slings where provided. Product weights are given on roll tickets. Use equipment appropriate to weight and dimension. Store and handle in accordance with good occupational hygiene and safety practice.

	Unit	VALUES
9. DIMENSIONS		
Standard roll length	m	100
Standard roll width	m	0.97
Approximate roll weight	Kg	100